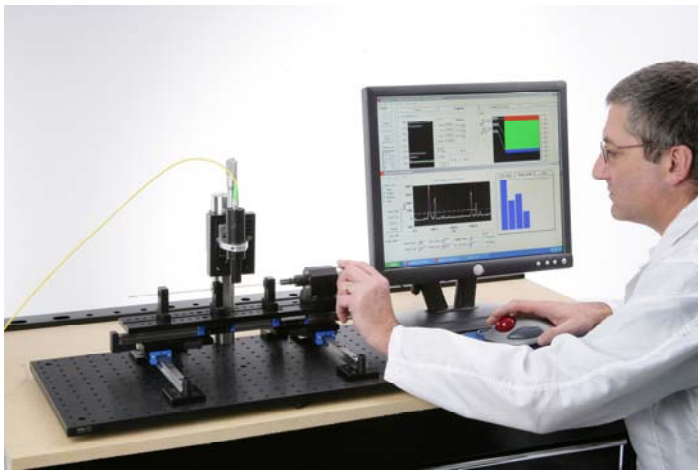


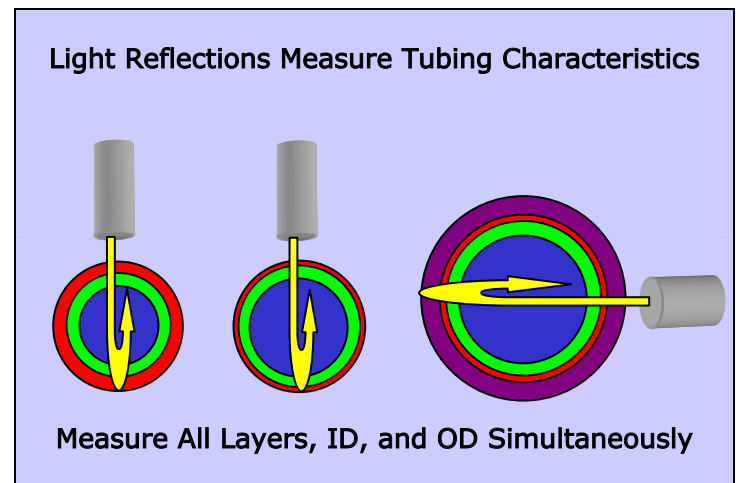
OPTIGAUGE™ Thickness Measurement System

Superior Multilayer Precision Tubing & Catheter Measurement

- A single system for detailed analysis of medical tubing with **simultaneous** measurement of every layer, OD, ID, concentricity, and ovality.
- Save time and money with rapid and consistent readings not subject to operator variability.
- Optical non-contact measurement provides in non-destructive testing with no liquid contact required.
- Analysis of a variety of medical tubing products with a broad thickness measurement range from 12µm to 12mm.



Scanning Tubing With OptiGauge



Revolutionary Tubing Thickness Gauging System

Traditional techniques for measuring tubing thickness have not kept pace with the needs of specialty manufacturers.

- Are you cutting tubing to view it under a scope?
- Are you using pin gauges to estimate ID?
- Are you struggling with water tanks and wondering how to get the same measurements in your lab without water?

THESE METHODS ARE TIME CONSUMING AND HIGHLY SUBJECTIVE.

In the lab and online, manufacturers are seeking to effectively measure vital thicknesses, using multiple gauges and manual systems.

Lumetrics offers a simplified approach to tubing measurement. The Lumetrics OPTIGAUGE™ Thickness Measurement System is a revolutionary new product that meets the current requirements of medical tubing manufacturers. And it provides the flexibility and scalability to adapt to a variety of measurement and monitoring applications.

Accurate Measurements On-Line or In the Lab

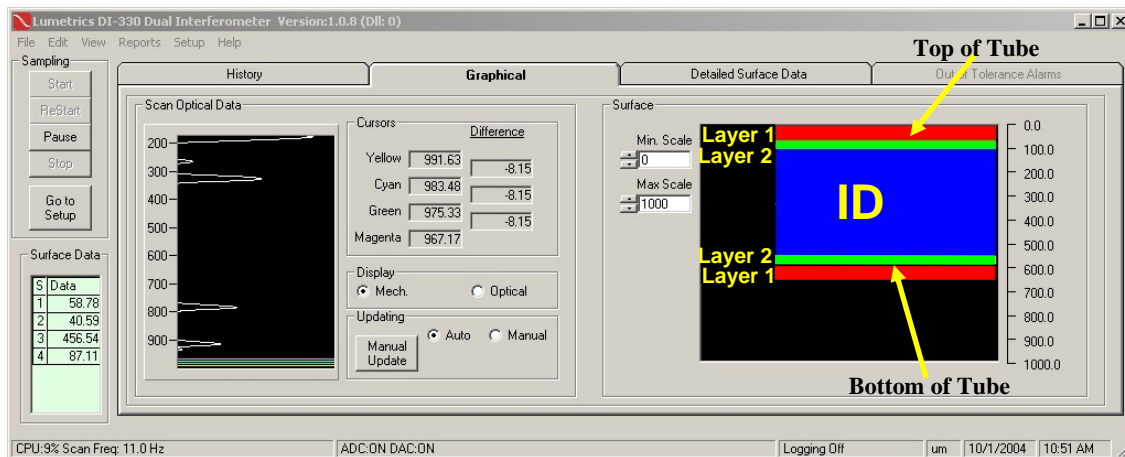
The OPTIGAUGE system precisely measures thickness of every layer of multilayer tubing on line or in the lab.

- Modular design allows remote – up to 1,000meters - monitoring of processes with a single system controlling multiple probes across lines. This provides specialty tubing manufacturers greater cost savings and confidence in their manufacturing processes by precisely measuring tubing thickness.

Lumetrics' OPTIGAUGE system provides consistent, objective measurements and all data is presented to the user in a clear format with automatically accepted or rejected presets. The OPTIGAUGE system allows complete 360-degree inspection of tubing samples. In the lab, this information is critical to those engineers designing and testing new products. In manufacturing this opens new opportunities reduce scrap and lower production costs while improving Quality Assurance. The system quickly pays for itself.

Simultaneously Measures Multiple Layers

Virtually any multi-layer tubing can be analyzed in detail by the OPTIGAUGE system. Each layer thickness is measured simultaneously and can be reported in a variety of ways. The figure below shows an analysis of two-layer tubing using an intuitive bar graph display. This information can then be automatically transferred directly to any spreadsheet format or archiving system.



Specifications

Measurement Range	0.00047" to 0.35"	Absolute accuracy	± 0.000004"
Measurement rate	30 Hz	Unit Dimensions	18"w x 17"d x 5.5"h

Call Lumetrics at (585) 214-2455 for more information

Or visit our website at: www.lumetrics.net

Dial Steve Heveron-Smith x-102 or Rob Vlosky x-103

Lumetrics, Inc. - 150 Lucius Gordon Drive - Rochester, New York 14586